

DRI-ECO-LC USER GUIDE

Condensation dampness is more common than you think, particularly in older homes. As winter sets in and the temperature starts to drop many of us will notice the problem more.

The DRI-ECO-LC offers a ventilation solution for the whole property, using the tried and tested Positive Input Ventilation (PIV) principle, where fresh, filtered air is introduced into the home at a continuous rate, encouraging movement of air from inside to outside.



The unit will improve your indoor air quality
creating a healthier living environment.

Why do I need a DRI-ECO-LC unit in my home and how will it benefit me?

► Condensation dampness

is more common than you may think, particularly in older homes that are poorly ventilated. Excess moisture is produced by everyday activities such as bathing, cooking, washing and drying your clothes inside.

► Condensed water

provides the ideal conditions for mould spores already in the air to germinate and grow; damaging your walls, furniture and clothes and contributing to health problems.

► DRI-ECO-LC

in your home reduces condensation by keeping moisture levels low. When used correctly it will protect your home from mould/damp and ultimately improve your indoor air quality, creating a healthier living environment.

► Research

has shown that reducing moisture in a home can reduce allergic reactions to dust mites and other pollutants that affect those suffering from respiratory disorders. The correct use and maintenance of your ventilation system will help to achieve this.

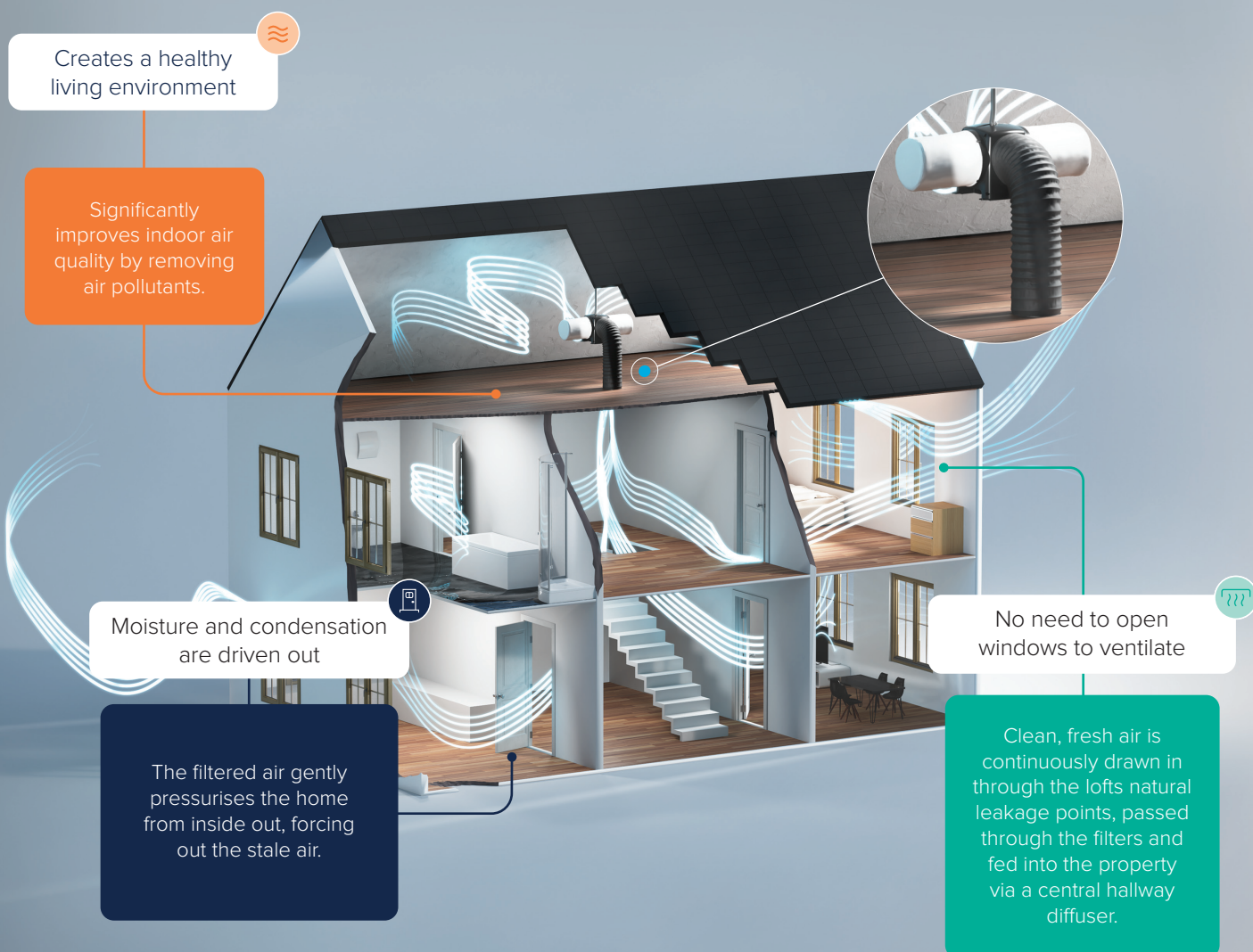
DRI-ECO-LC

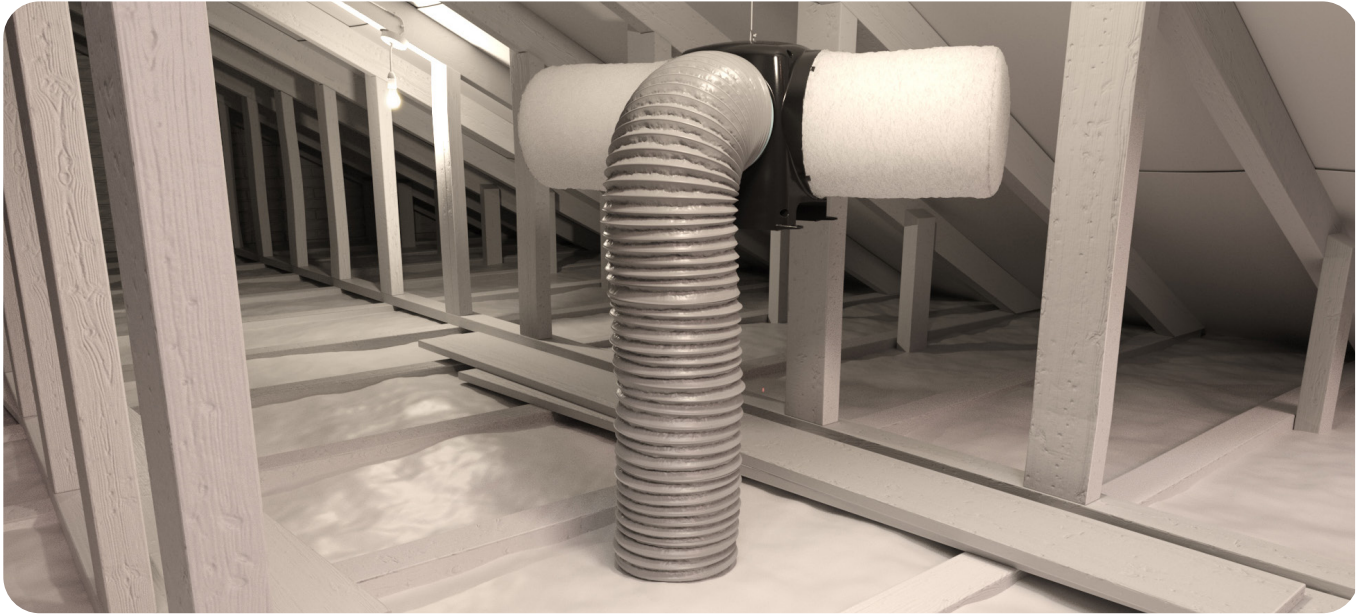
HOW DOES PIV WORK

- ▶ Located in your loft space, the DRI-ECO-LC will continuously draw in air that enters your loft via natural leakage points or fixed ventilation points eg. soffit vents.
- ▶ The air is drawn into the DRI-ECO-LC through the filters and is gently dispersed into your home via a diffuser that is located in the ceiling of your central hallway.

This process will ensure that contaminated and moisture-laden air in your home is continuously diluted, displaced and replaced with good quality, fresh air.

The result is an environment in which condensation dampness and mould are reduced or eliminated, and where allergens and pollutants are kept to a minimum.





DRI-ECO-LC FREQUENTLY ASKED QUESTIONS

How do I operate the unit?

During installation your unit will have been set to run continuously at a level that will adequately ventilate your home.

As house sizes and occupancy levels vary, your DRI-ECO-LC has six speed controls which can be adjusted to suit your home.

What maintenance is required?

To maintain the optimum performance of your DRI-ECO-LC the filter must be kept clean and clear. The replacement of the filters is required every 5 years.

If I need some advice, who do I contact?

In the first instance please contact your housing provider or house builder.

Nuaire have a team of technical experts on hand to help. Our operating hours are 9am to 5pm Monday to Friday (excluding Bank Holidays) contact us on 029 2085 8400 (option 2).

When calling Nuaire, if possible, please check your fan for the serial number located on the fan label.